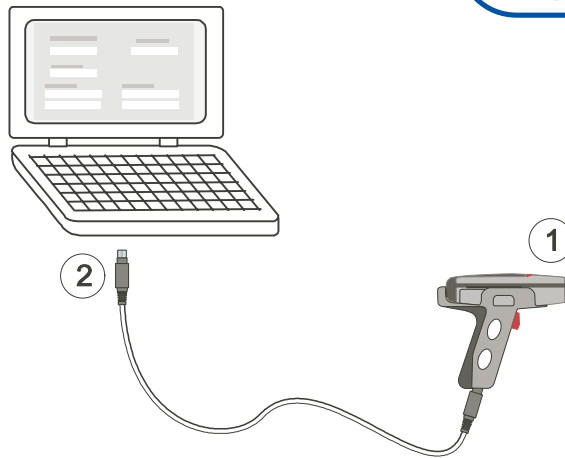


Technical Reference Sheet

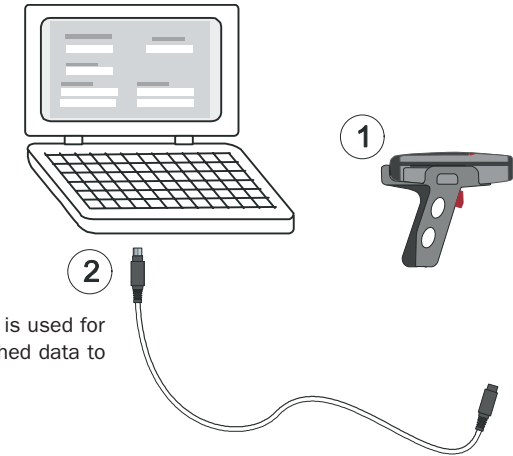
USB

A single MS-Q imager is connected to the host via a standard USB cable.



BATCH/BATTERY

A single MS-Q imager contains a long-life battery, allowing the user to save 1 MB of data in memory, and read/trigger up to 4,000 times. The data is transmitted by linking to the host after the data is acquired in memory.



Note: USB cable is used for transferring batched data to the host.

System Matrix

| Product | Reference No. | Description |
|--------------------------------------|---------------|---|
| (1) MS-Q Kit ¹ | FIS-61XX-XXXX | Imager |
| (2) USB cable ¹ | Included | USB communication cable, 6' (1.8 m) |
| ESP-MP™ Software/ User Manuals CD | 37-000001-01 | Digital user manuals & imager upload software |

¹MS-Q kit includes USB cable.

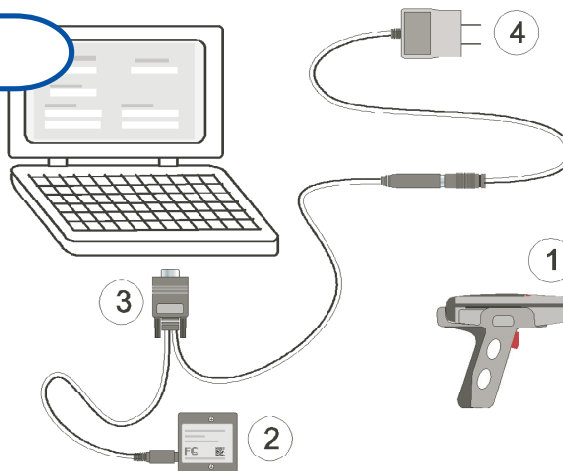
System Matrix

| Product | Reference No. | Description |
|--------------------------------------|---------------|---|
| (1) MS-Q Kit ¹ | FIS-61XX-XXXX | Imager |
| (2) USB cable ¹ | Included | USB communication cable, 6' (1.8 m) |
| ESP-MP™ Software/ User Manuals CD | 37-000001-01 | Digital user manuals & imager upload software |

¹MS-Q kit includes USB cable.

BLUETOOTH MODEM

MS-Q imager turns into a cordless unit when paired with a Bluetooth modem. The imager can operate up to 328' (100 m) away from the host.



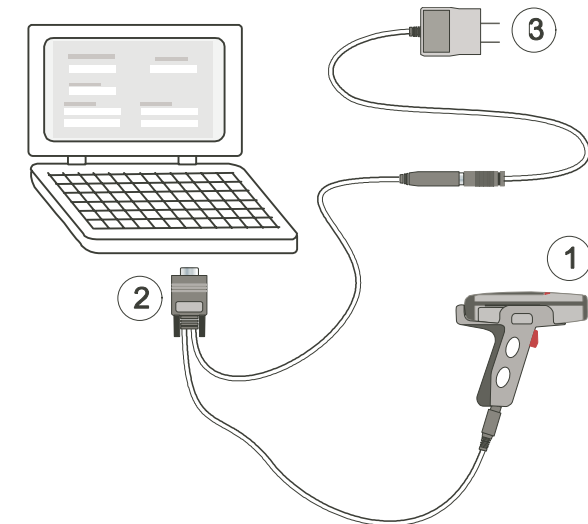
System Matrix

| Product | Reference No. | Description |
|--------------------------------------|---------------|---|
| (1) MS-Q Kit | FIS-61XX-XXXX | Imager |
| (2) Bluetooth modem kit ² | 98-000076-XX | Serial gateway, power supply |
| (3) RS232 cable ² | Included | Cable, 8" coiled, RS232 |
| (4) Power Supply ² | Included | Wall mount, 90-264 VAC, +5 VDC, 1.5 A |
| ESP-MP™ Software/ User Manuals CD | 37-000001-01 | Digital user manuals & imager upload software |

²Bluetooth modem kit includes RS232 cable and power supply. Three power supplies are available, contact Microscan for ordering options.

RS-232

A single MS-Q imager is connected directly to the host via an RS-232 cable.



System Matrix

| Product | Reference No. | Description |
|--------------------------------------|---------------|--|
| (1) MS-Q Kit | FIS-61XX-XXXX | Imager |
| (2) RS232 Kit ³ | 98-000074-XX | Kit, RS232 interface, 8" coiled cable |
| (3) Power Supply ³ | Included | Power supply, wall mount, 90-264 VAC, A +5 VDC, 1.5A |
| ESP-MP™ Software/ User Manuals CD | 37-000001-01 | Digital user manuals & imager upload software |

³RS232 kit includes a power supply. Three power supplies are available, contact Microscan for ordering options.